

Monthly Weather Summary in Thailand May 2019

The weather in May 2019 was swelter especially in upper Thailand where hot weather was presented almost the whole month especially during early month that successive very hot day was found in several areas of the northern part including very hot weather in many areas of the northeastern and central parts due to the influence of heat low pressure cell covering upper Thailand at that time. Monthly mean temperature was higher than normal in all regions and the average temperature over Thailand was 1.3 °C higher than normal and the new highest record of maximum temperature was established in some stations. For rainfall, May 2019 was actually drier than usual with less and uneven distribution of rain during the beginning and the middle of the month. After that, during late month, the southwest monsoon blowing over the Andaman Sea and Thailand accompanied with the monsoon trough lying over the northern and upper northeastern parts towards the low pressure cell in the Gulf of Tonkin and the southeasterly wind prevailing over the lower northeastern, eastern and the Gulf of Thailand brought consecutive rainfall in many areas that considered as the beginning of the rainy season of the year on May 20. Monthly rainfall was lower than normal in every parts i.e. northern part 49.6 mm (28%), northeastern part 29.1 mm (16%), central part 55.4 mm (32%), eastern part 35.3 mm (16%) and southern part (east coast) 3.6 mm (3%) and southern part (west coast) 2.8 mm (1%). The total rainfall over Thailand in May was 17% below normal.

1 - 10 May : Heat low pressure cell covered upper Thailand accompanied with the southerly and southeasterly wind prevailed over lower northern, northeastern, central and eastern parts during early period. In addition, the southwesterly wind prevailed over upper Thailand during late period. These conditions caused generally hot weather in upper Thailand especially in the northern part that experienced very hot weather almost areas during early and mid-period with very hot weather in many areas of the northeastern and central parts and also in some areas of the eastern parts. The highest temperature was 43.0 °C at Amphoe Mueang in Lampang province on May 3 and at Amphoe Mueang in Uttaradit province on May 3 and 4. For rainfall, upper Thailand was mainly observed rainfall in the northeastern part with the highest daily rainfall of 135.4 millimeter at agrometeorological station in Ubon Ratchathani province on May 8. Thunderstorm with gusty wind was reported at Chiang Mai, Phetchabun, Amnat Chareon and Surin provinces on May 2, at Sukhothai, Phisanulok, Phetchabun, Phichit, Si Sa Ket and Nakhon Sawan provinces on May 3, at Lop Buri province on May 4, at Phrae, Nong Khai, Udon Thani and Nakhon Sawan provinces on May 5 at Udon Thani, Khon Kaen, Roi Et, Nakhon Ratchasima and Nong Bua Lam Phu provinces on May 6, at Phrae, Uttaradit, Udon Thani, Sakon Nakhon, Ubon Ratchathani and Kanchanaburi provinces on May 7, at Mae Hong Son, Nan, Khon Kaen, Ubon Rathchathani, Mahasarakham and Nakhon Sawan provinces on May 8. Hail was reported at Surin province on May 2. In southern part, hot weather persisted in almost areas of east coast with the maximum tempersture of 39.5 °C at Amphoe Mueang in Prachuap Khiri Khan province on May 2 and at Phun Phin in Surat Thani province on May 3. For rainfall, with the influence of the southwesterly wind blowing over the Andaman Sea and southern part during early and mid-period and the westerly wind prevailed over the mentioned areas during late period, plentiful of rain was found during the middle and the end of the period especially fairly

widespread rain with heavy to very heavy rainfall along the west coast. The highest daily rainfall was 129.3 millimeter at Takua Pa in Phang-nga province on May 4.

11 - 20 May : Hot weather persisted in upper Thailand with very hot weather in many areas of the northern part and in some areas of the northeastern, central and southern parts. The maximum temperature was 42.5°C at Amphoe Mueang in Nan province on May 19 and at Amphoe Mueang in Lampang province on May 20. For rainfall, with the prevailing of the southwesterly wind over the Andaman Sea and Thailand during early period and the low pressure cell covered the northern and northeastern parts during May 13-14 and the confluence of the southwesterly and southeasterly over upper Thailand during May 13-16. These caused scattered to fairly widespread rain in upper Thailand with isolated heavy to very heavy rainfall. The highest daily rainfall was 185.0 millimeter at Kamphaeng Saen in Nakhon Pathom province on May 12. Thunderstorm and gusty wind was reported at Mae Hong Son and Phrae provinces on May 11, at Phrae, Phitsanulok, Tak, Uttaradit, Nan and Nakhon Sawan provinces on May 12, at Phayao province on May 13 and 16, at Kamphaeng Phet province on May 14 and at Mae Hong Son province on May 15 and 19, at Phrae province on May 20. For southern part, due to the moderate to rather active southwesterly wind prevailed over the Andaman Sea, southern part and the Gulf of Thailand during early and mid-period and later weakened resulted in plentiful of rain almost the period with scattered to fairly widespread rain and heavy rainfall in some areas along the east coast whereas fairly widespread rain with isolated heavy rainfall during early and mid-period and decreasing to scattered rain during late period along the west coast. The heaviest daily rainfall was 80.0 millimeter at Phra Phrom in Nakhon Si Thammarat province on May 15.

21 - 31 May : Due to the prevailing of southwest monsoon over the Andaman Sea, Thailand and the Gulf of Thailand throughout the period, the low pressure cell covering the Gulf of Tonkin and the coastal Vietnam during early period, the monsoon trough lying across the northern and northeastern parts towards the low pressure cell in the Gulf of Tonkin during the second half of the period accompanied with the southeasterly wind prevailed over the lower northeastern, eastern and the gulf of Thailand during late period resulted in abundant rain in upper Thailand especially in the northeastern, central and eastern parts that obtained scattered to fairly widespread rain with isolated heavy to very heavy rainfall. The maximum daily rainfall was 120.0 millimeter at Kung Si in Kalasin province on May 23. Thunderstorm and gusty wind was reported at Mae Hong Son, Chiang Mai, Lampang, Nan, Phrae, Sukhothai, Phayao, Kamphaeng Phet, Loei, Kalasin, Nong Khai, Udon Thani and Nakhon Phanom provinces on May 21, at Uthai Thani, Saraburi and Sa Kaeo provinces on May 22, at Chiang Mai, Nan and Phayao provinces on May 24, at Phichit and Nong Bua Lam Phu provinces on May 23, at Phrae, Nong Khai and Nakhon Sawan provinces on May 25, at Roi Et province on May 26, at Khon Kaen and Suphan Buri provinces on May 27, at Chinag Mai, Phichit and Suphan Buri provinces on May 28. In southern part, scattered to fairly widespread rain was found almost the period with heavy rainfall in some areas. The highest daily rainfall was 80.6 millimeter at agrometeorological station in Yala province on May 21 with thunderstorm and gusty at Prachuap Khiri Khan province on the same day. Although temperature relatively decreased during this period, hot weather remained in the northern and central parts with very hot weather in some areas. The maximum temperature of 41.0 °C was measured at Amphoe Mueang in Lampang province on May 21.

Breaking record of daily maximum temperature over Thailand in May 2019

Station	New Record 2019		Previous Record		Start Year
	Temperature (°C)	Date	Temperature (°C)	Date / Year	
<u>Northern Part</u>					
Chiang Rai	42.0	20	41.2	2/1966 12/2016	1951
Nan	42.5	19	42.1	2/1960	1951
Nan Agromet. Stn.	41.3	3	41.0	23/1969 2/1980 9/1992	1969
Thung Chang (Nan)	41.5	20	39.9	8/2003	1998
Lom Sak (Phetchabun)	41.4	3	40.6	7/2003 1/2004	1970
<u>Northeastern Part</u>					
Loei	42.2	2	41.8	7/2003	1955
Loei Agromet. Stn.	42.5	2	41.5	7/2003	1970
Tha Pra (Khon Kaen)	41.5	2	41.3	7/003	1970
Chaiyaphum	41.2	2	41.1	7/2003	1957
Nang Rong (Buriram)	40.7	2	40.7	2/1998	1970
<u>Central Part</u>					
Ratchaburi	40.4	2	39.8	7/1992	1993
Samut Prakan Agromet. Stn.	36.5	2	35.8	17/2013	2012
Bangkok Metropolis	40.0	2	39.7	10/2010	1951
Klong Toey	39.5	3	39.3	10/2010	1994
<u>Eastern Part</u>					
Laem Chabang (Chonburi)	40.1	20	38.7	6/1998	1994
<u>Southern Part</u>					
Chumphon	38.3	3	38.2	10/1958	1951
Sawi (Chumphon)	39.2	3	38.5	21/1983 5/2005	1969
Nakhon Si Thammarat	38.4	7	38.1	1/1998 12/2016	1952
Nakhon Si Thammarat Agromet. Stn.	38.1	3,12	38.1	12/2016	1984
Phatthalung Agromet. Stn.	37.8	2	37.7	12/2016	1981
Hat Yai (Songkhla)	38.5	3,4	38.5	4/2016	1969

Note : Rainfall, temperatures and natural disasters available in this report are preliminary data.

Climatological Center
Meteorological Development Division
Thai Meteorological Department

Monthly Current Report
Rainfall and Accumulative Rainfall
May 2019

Northern Thailand

Station	Temperature (°c)		Rainfall (mm)		Accumulative rainfall (mm) Since 1 January	
	Mean	Above or below normal	Actual	Above or below normal	Actual	Above or below normal
Chiang Rai	30.9	3.8	110.2	-103.2	190.0	-170.8
Mae Hong Son	31.3	2.4	229.8	55.3	285.2	18.3
Phayao	30.5	2.7	76.1	-103.6	148.4	-165.6
Chiang Mai	31.1	2.9	77.3	-84.7	167.4	-82.8
Tha Wang Pha	30.7	2.6	237.4	54.4	323.2	-11.8
Nan	31.2	2.6	158.4	-18.9	320.4	-5.5
Lamphun	31.1	2.4	110.6	-44.2	162.7	-57.4
Lampang	31.7	2.9	201.8	41.4	247.3	-13.4
Mae Sariang	30.8	2.4	93.2	-69.1	139.9	-89.3
Phrae	31.4	2.4	193.3	15.2	301.2	-1.2
Uttaradit	32.4	2.6	89.2	-140.8	100.8	-243.6
Bhumibol Dam	31.9	2.7	153.8	-43.8	169.5	-124.8
Tak	31.5	1.9	145.5	-29.4	209.4	-46.0
Mae Sot	29.9	2.0	64.1	-110.1	144.4	-100.0
Umphang	26.9	1.3	96.1	-98.9	220.8	-139.3
Phitsanulok	31.6	1.7	66.8	-104.1	206.1	-64.6
Lom Sak	30.0	1.4	81.4	-69.4	210.4	-69.3
Phetchabun	30.3	1.5	134.3	-28.5	289.0	-19.4
Wichian Buri	30.8	1.4	78.2	-79.9	217.4	-101.5
Kamphaeng Phet	31.3	2.1	166.4	-29.1	242.4	-58.0
Over the area	30.9	2.3	128.2	-49.6 -28%	214.8	-77.4 -26%

Northeastern Thailand

Station	Temperature (°c)		Rainfall (mm)		Accumulative rainfall (mm) Since 1 January	
	Mean	Above or below normal	Actual	Above or below normal	Actual	Above or below normal
Nong Khai	29.7	1.1	213.7	-11.2	353.5	-20.2
Loei	29.3	1.6	109.9	-89.4	148.0	-215.6
Udon Thani	30.0	1.1	86.3	-112.2	173.5	-177.1
Nakhon Phanom	29.2	0.8	164.5	-92.6	346.9	-105.4
Sakon Nakhon	29.0	0.6	206.5	-21.1	303.1	-109.3
Mukdahan	29.8	1.0	138.3	-61.2	245.9	-89.9
Khon Kaen	30.0	1.1	216.4	47.7	332.8	7.0
Kosum Phisai	30.3	1.0	232.8	71.3	294.7	-26.1
Roi Et	30.0	1.0	123.2	-62.9	273.0	-53.0
Chaiyaphum	30.0	1.1	190.0	49.8	272.8	-30.1
Ubon Ratchathani	30.2	1.2	236.3	27.7	347.2	3.9
Tha Tum	29.7	0.2	172.6	0.3	310.0	-14.4
Surin	29.9	1.1	147.2	-32.6	231.1	-104.7
Nakhon Ratchasima	30.5	1.4	102.0	-52.1	150.5	-137.2
Chok Chai	30.4	1.6	25.9	-123.1	86.0	-200.6
Nang Rong	29.3	0.5	162.9	-3.7	243.5	-76.9
Over the area	29.8	1.0	158.0	-29.1 -16%	257.0	-84.4 -25%

- NOTES :
- 1) Mean temperature is the average of daily dry-bulb temperature
 - 2) "T" is trace, rainfall amount less than 0.1 mm.
 - 3) "blank" is incomplete data.
 - 4) Temperature and rainfall are preliminary data.

Monthly Current Report
Rainfall and Accumulative Rainfall
May 2019

Central Thailand

Station	Temperature (°c)		Rainfall (mm)		Accumulative rainfall (mm) Since 1 January	
	Mean	Above or below normal	Actual	Above or below normal	Actual	Above or below normal
Nakhon Sawan	31.5	1.5	233.2	82.5	312.6	48.9
Bua Chum	31.0	1.7	90.1	-46.1	153.1	-126.1
Lop Buri	31.1	1.5	78.6	-68.5	99.5	-173.8
Suphan Buri	31.2	1.4	107.7	-6.6	159.0	-33.9
Thong Pha Phum	29.8	1.7	115.8	-111.7	161.4	-236.1
Kanchanaburi	31.5	1.8	99.7	-45.6	127.2	-147.1
Bangkok Airport	31.1	1.3	119.4	-88.2	218.0	-138.9
Bangkok Metropolis	31.3	1.4	89.3	-158.4	138.4	-276.1
Over the area	31.1	1.6	116.7	-55.4 -32%	171.2	-135.4 -44%

Eastern Thailand

Station	Temperature (°c)		Rainfall (mm)		Accumulative rainfall (mm) Since 1 January	
	Mean	Above or below normal	Actual	Above or below normal	Actual	Above or below normal
Prachin Buri	31.0	1.7	241.8	10.8	323.4	-99.0
Kabin Buri	30.2	1.3	73.4	-118.9	229.8	-146.7
Aranyaprathet	30.7	1.5	65.2	-103.1	205.4	-134.0
Chon Buri	31.0	1.2	117.9	-57.4	266.6	-54.5
Ko Sichang	30.8	1.2	233.7	99.3	263.2	-24.7
Pattaya	30.2	1.0	163.1	14.8	334.0	38.5
Sattahip	30.7	1.1	136.4	-35.5	255.4	-99.2
Rayong	30.3	0.6	197.2	-1.4	447.1	39.4
Chanthaburi	29.3	1.0	272.5	-120.0	490.4	-154.3
Khlong Yai	28.6	0.4	384.7	-42.0	863.5	12.9
Over the area	30.3	1.1	188.6	-35.3 -16%	367.9	-62.2 -14%

- NOTES :
- 1) Mean temperature is the average of daily dry-bulb temperature
 - 2) "T" is trace, rainfall amount less than 0.1 mm.
 - 3) "blank" is incomplete data.
 - 4) Temperature and rainfall are preliminary data.

Monthly Current Report
Rainfall and Accumulative Rainfall
May 2019

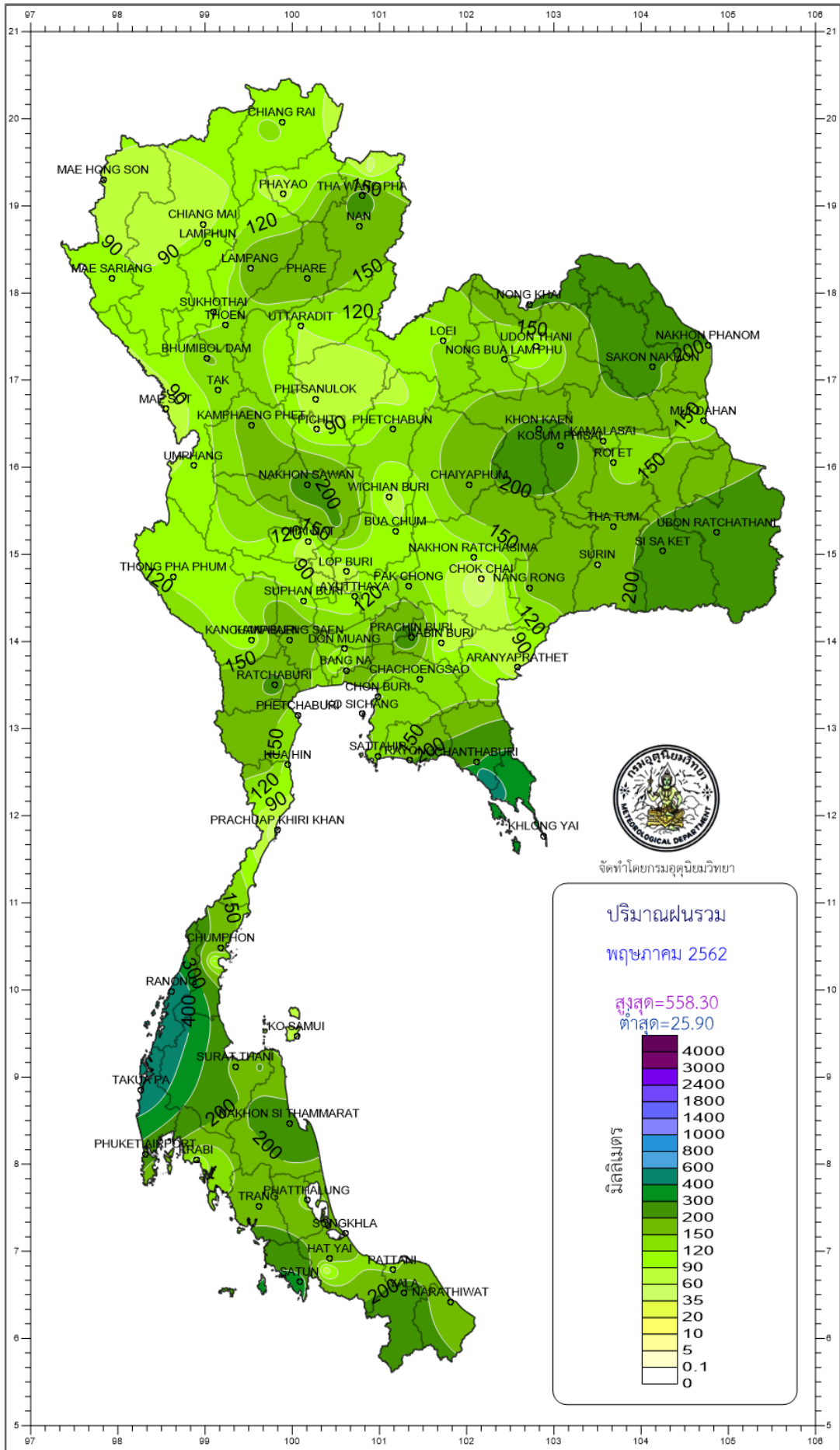
Southern Thailand, east coast

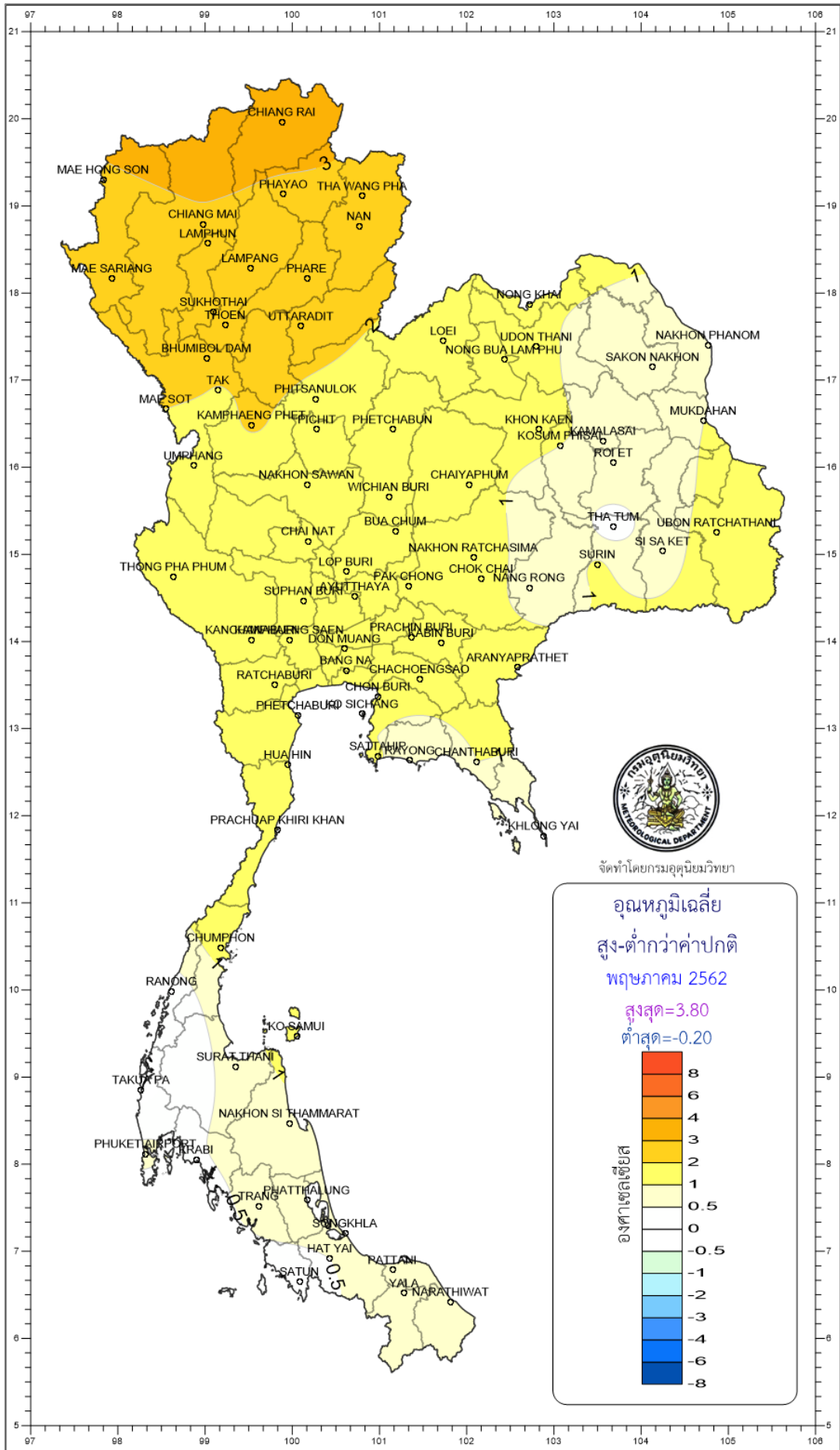
Station	Temperature (°c)		Rainfall (mm)		Accumulative rainfall (mm) Since 1 January	
	Mean	Above or below normal	Actual	Above or below normal	Actual	Above or below normal
Phetchaburi	30.5	1.1	117.1	17.6	133.7	-51.1
Hua Hin	30.3	1.0	105.5	-3.4	134.1	-102.2
Prachuap Khiri Khan	30.6	1.7	39.3	-87.6	179.7	-120.7
Chumphon	29.2	1.2	182.2	-8.6	476.8	-1.1
Surat Thani	28.4	0.7	175.0	-3.0	290.8	-33.7
Ko Samui	30.2	1.3	71.4	-84.5	347.1	-113.3
Nakhon Si Thammarat	29.1	0.9	225.0	51.2	679.7	95.6
Songkhla	29.5	0.7	157.6	38.0	390.7	12.9
Hat Yai Airport	28.3	0.5	176.2	28.5	432.0	12.4
Pattani Airport	29.0	0.8	140.9	3.4	454.6	110.2
Narathiwat	29.2	1.0	151.0	8.9	484.8	-2.8
Over the area	29.5	1.0	140.1	-3.6 -3%	364.0	-17.7 -5%

Southern Thailand, west coast

Station	Temperature (°c)		Rainfall (mm)		Accumulative rainfall (mm) Since 1 January	
	Mean	Above or below normal	Actual	Above or below normal	Actual	Above or below normal
Ranong	27.9	0.2	558.3	61.7	890.4	150.0
Takua Pa	27.7	-0.2	511.5	74.0	878.5	35.9
Phuket	29.2	0.4	160.3	-99.2	349.1	-181.0
Phuket Airport	29.1	0.7	246.8	-34.7	516.8	-82.4
Ko Lanta	29.0	0.3	149.4	-95.4	313.2	-146.0
Trang Airport	28.4	0.7	177.7	-39.8	547.3	53.4
Satun	28.4	0.3	346.9	113.6	566.5	-61.8
Over the area	28.5	0.3	307.3	-2.8 -1%	580.3	-33.1 -5%

- NOTES :
- 1) Mean temperature is the average of daily dry-bulb temperature
 - 2) "T" is trace, rainfall amount less than 0.1 mm.
 - 3) "blank" is incomplete data.
 - 4) Temperature and rainfall are preliminary data.





จัดทำโดยกรมอุตุนิยมวิทยา